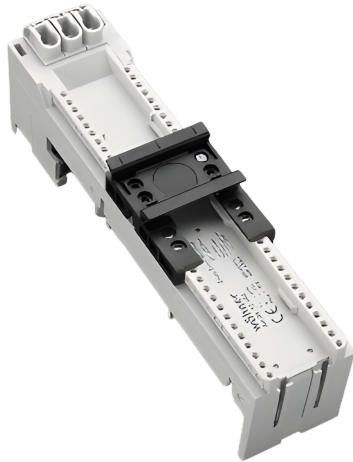


busbar adapter 32 A (32486)



The picture may show a similar product.

Description

Part No.: **32486** 000

EQUES[®] 60Classic

busbar adapter 32 A

1 adjustable mounting rail

45 x 200, without leads, with spring terminals 1.5 - 6 mm² from front
for busbars 12, 15, 20, 25, 30 x 5, 10 and section busbars

System

60Classic

Advantages of the product

Free phase selection.

Click mechanism when pushing onto the busbar.

Product group 05

Subgroup 21

pack size 4

EAN 4021267324865

ETIM 5.0 EC001531

ETIM 8.0 EC001531

Approvals

Standards

IEC 61439-1:2020

CCC approval: no certification required

Technical data

Details IEC

Standards

IEC 61439-1:2020

Electrical data IEC

rated current (IEC): 32 A

rated voltage (IEC) AC: 690 V

rated isolation voltage U_i AC: 800 V

rated surge voltage U_{imp} : 6 kV

power dissipation of the article:

The power dissipation at a typical load of 80 % results to 1.6 W.

(The power dissipation at full load would be 2.5 W.)

Supplementary data IEC

The following values have been verified with tests under certain conditions. Please ask Wöhner for this conditions before designing your panel.

max. permitted voltage (IEC) DC: 800 V

min. permitted operation temperature -40°C

Mechanical data

W x H x D: 45 x 200 x 63

weight: 32.5 kg/100

poles: 3-pole

for busbars: 12, 15, 20, 25, 30 x 5, 10 and section busbars

Material properties

halogen-free: No

Application notes

There must be a clearance of at least 12 mm above the article to remove it from the busbar system.
the short-circuit capacity of the combination of adapter and motor starter depends on the motor starter

Accessories

accessories for mounting



32969 000

mounting rail end stop
for adjustable mounting rails

connection accessories



32907 000

lead AWG 10 (6 mm²), 130 mm long
for adapters with cage clamps



32921 000

lead AWG 14 (2.5 mm²), 105 mm long
for adapters with cage clamps



32916 000A

lead AWG 10 (6 mm²), 280 mm long
for adapters with cage clamps



32929 000A

lead AWG 12 (4 mm²), 190 mm long
for adapters with cage clamps



32935 000A

lead AWG 10 (6 mm²), 190 mm long
for adapters with cage clamps



32918 000A

lead AWG 14 (2.5 mm²), 190 mm long
for adapters with cage clamps

further accessories



32947 000

mounting rail 45 mm
for busbar adapters



32963 000

side-mounted module for busbar adapters
attachable to both sides
9 x 200
for: EEC60..



32979 000A

positioning piece for Eaton PKZ
for 45mm wide adapters with adjustable mounting rails



32952 000A

positioning piece for Siemens S00 and S0
for 45mm wide adapters with adjustable mounting rails



32940 000A

mounting rail 54 mm
for busbar adapters

<https://pim.woehner.de/EN/EN/1000042842>